

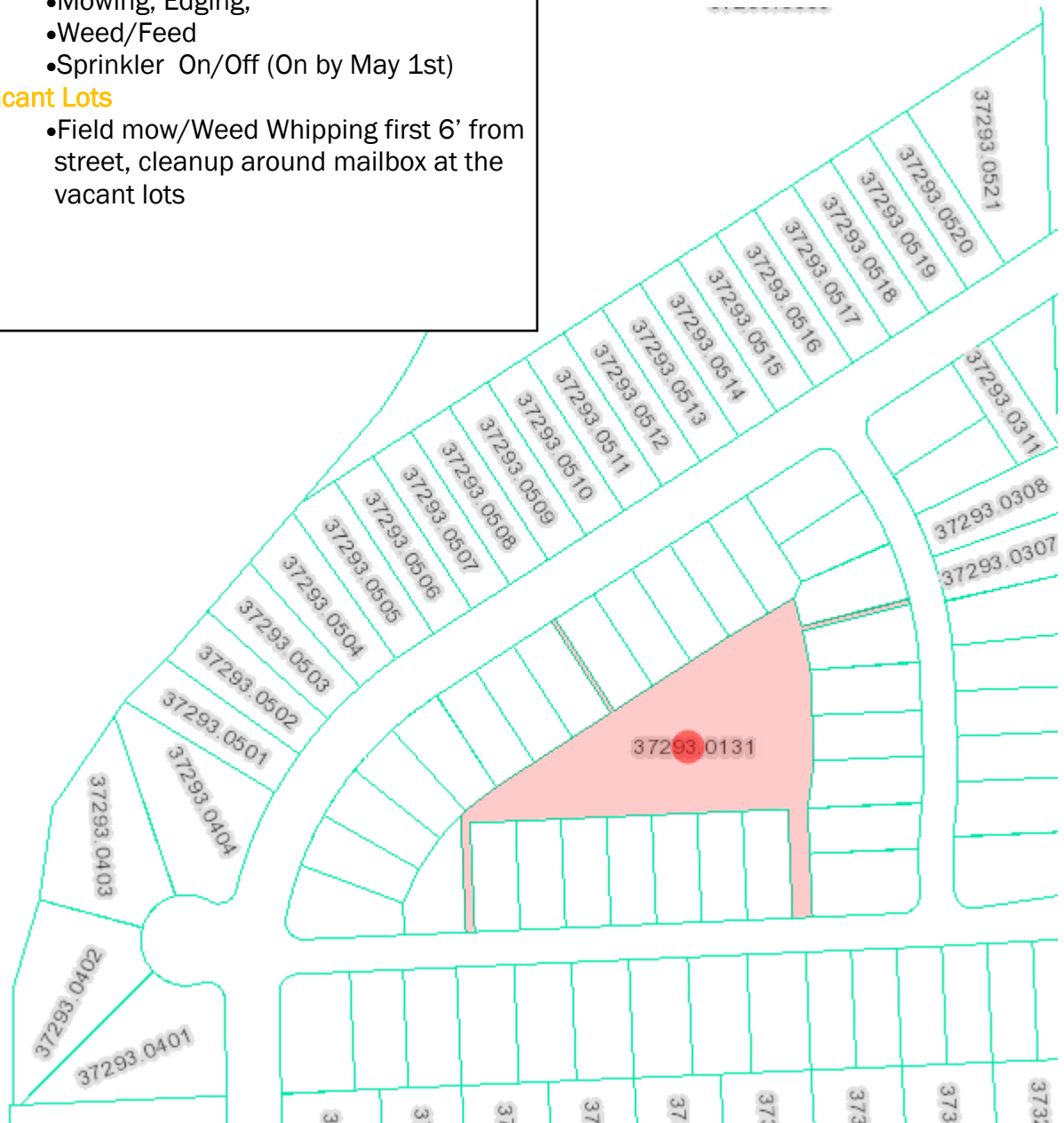


Gleneden Heights 7th/8th Addition HOA

37293.0131

15916 N Gleneden Dr—off Wandermere/Glencrest Rd

- 83 Lots—70 Occupied Homes
- Commons area / Park and 4 paths
 - Mowing, Edging,
 - Weed/Feed
 - Sprinkler On/Off (On by May 1st)
- Vacant Lots
 - Field mow/Weed Whipping first 6' from street, cleanup around mailbox at the vacant lots



HOMEOWNERS ASSOCIATION SERVICES, INC

11808 E MANSFIELD AVE, SUITE 1, SPOKANE, WA 99206 509.922.2494 OFFICE@HOAAGENT.COM